



Toddler

LUCKY

Adventures

AT HOME



Fluffy Slime



Materials

- 1/2 cup of white Elmer's Glue**
- 3 cups of shaving cream**
- 1/4 - 1/2 tsp baking soda**
- Green food coloring**
- 1 tbsp saline solution**
- Glitter, confetti, coins, theme accessories**
- Large bowl, spoon, measuring cups and spoons**

How To

- 1. Start by adding your shaving cream, glue and food coloring to a bowl**
- 2. Stir in the baking soda**
- 3. Mix in your saline solution and stir until slime forms and pulls away from the sides of bowl**
- 4. Start kneading your slime! It will appear stringy at first but just work it around with your hands and you will notice the consistency changes**

***adding more activator (saline solution) reduces the stickiness**

Shamrock Crown

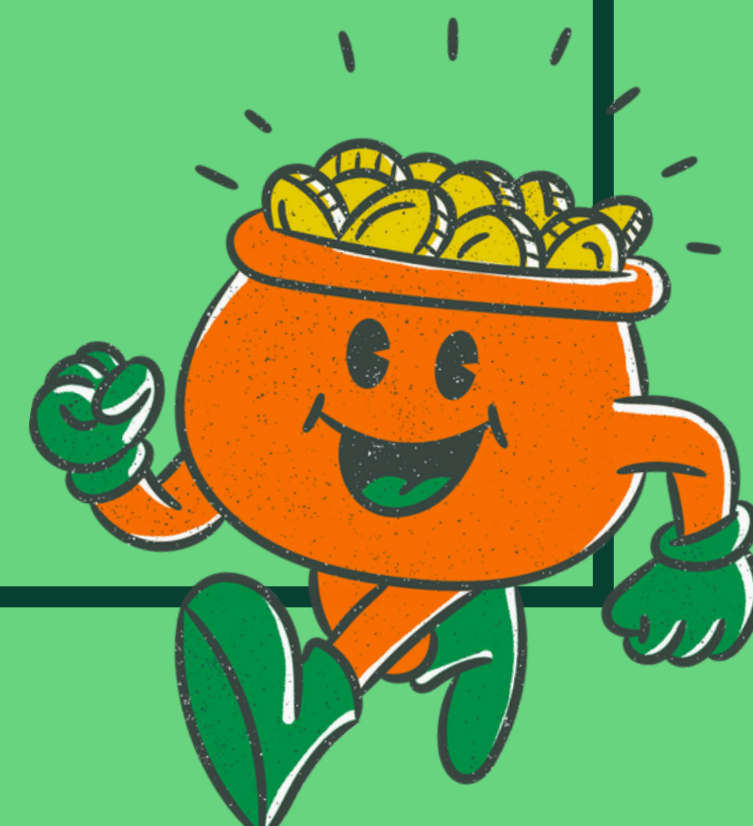


Materials

Shamrock Chenille Stem Crown Craft Kit (Oriental Trading)

How To

1. Follow directions that come with the craft kit!



Rainbow Color Match



Materials

A cardboard box
Markers or paint
A cutter
Color popsicles sticks

How To

- 1. Draw a rainbow using your markers or paint, and color your rainbow to match your sticks**
- 2. Using a cutter make a few openings on the cardboard to insert the sticks**
- 3. Let kids poke the rainbow and match colors!**

Rainbow Letters Sensory Bottle



Materials

Empty bottle
Gold gems or coins
rainbow pom poms
Letter beads
Duct tape

How To

- 1. place gold gems or coins at the bottom of bottle**
- 2. place pom poms in the bottle and sprinkle letter bead in after each color to make the beads all over the bottle**
- 3. Close lid**
- 4. Cover the top with duct tape**



Gold Sensory Bottle



Materials

Empty bottle
Water
1/2 cup clear glue
Gold metallic paint
Gold sequins
Gold glitter
Hot glue
Duct tape

How To

- 1. Fill empty bottle halfway with water**
- 2. Add 1/2 cup of clear glue**
- 3. Pour in about 2 TBS of metallic paint**
- 4. Add sequins and glitter**
- 5. Fill to the top with water, leaving about 1/4 inch space at the top so there is room to shake**
- 6. Hot glue lid closed**
- 7. Cover lid with tape**

Clover Sensory Bottle



Materials	How To
<p>Empty bottle Water 1/2 cup clear glue Green fine glitter Clover sequins Green pom poms Hot glue Duct tape</p>	<ol style="list-style-type: none">1. Fill empty bottle halfway with water2. Add 1/2 cup of clear glue3. Add green glitter4. Add sequins5. Add pom poms6. Fill to the top with water, leaving about 1/4 inch space at the top so there is room to shake7. Hot glue lid closed8. Cover lid with tape





Lucky Charms Sensory Bin



Materials

- Tub or tray**
- Lucky Charms cereal**
- Scoops**
- Coins**
- Theme accessories**

How To

- 1. Add cereal to tub or tray**
- 2. Add in scoops, coins, and themed accessories**
- 3. Time to play!**



Shamrock Scoop



Materials

Tub or tray
Green pom poms
Foam shamrocks
Coin
Scoops
Spoons
Cups

How To

- 1. Add pom poms to tub or tray**
- 2. Add in shamrocks, scoops, cups, and spoons**
- 3. Time to play!**



Shamrock Dough

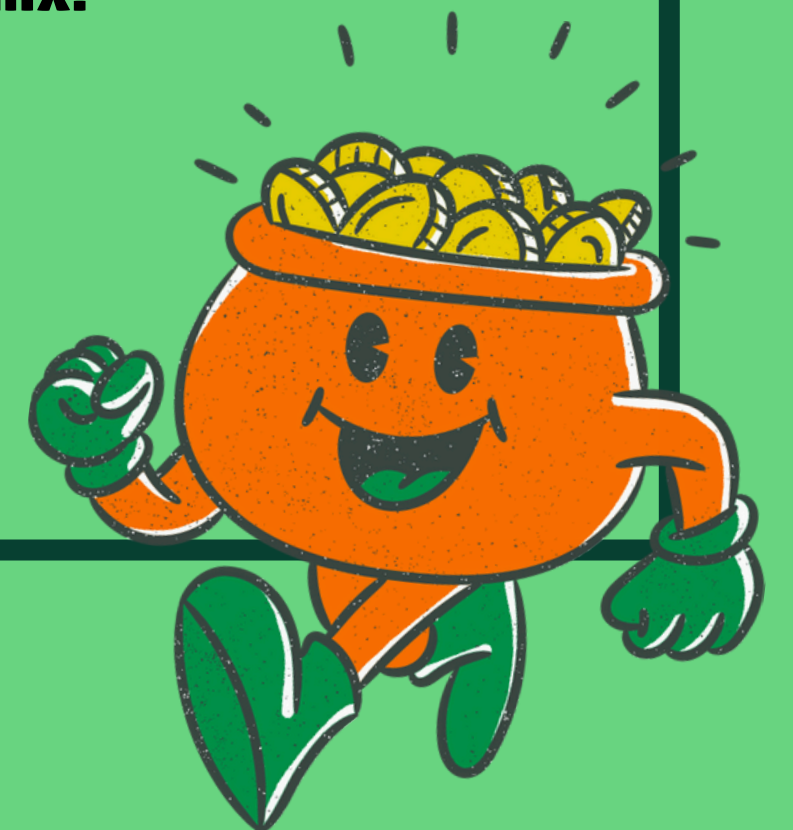


Materials

14 oz cornstarch
10 oz shaving cream
Bowl
Green Food Coloring
Gold Glitter
Coins
Theme accessories

How To

- 1. Add a full bag of corn starch to bowl**
- 2. Then add 3/4 can of shaving cream**
- 3. Add food coloring**
- 4. Now mix, mix, mix!**
- 5. Time to play!**



Lucky Water Play



Materials

Tub or bowl
Water
Green food coloring
Coins
Shamrocks
Spoons
Cups

How To

- 1. Fill tub or bowl up with water**
- 2. Add food coloring and stie**
- 3. Add in coins, shamrocks, spoons, and cups**
- 4. Time to play!**

